

Lebanon

School District
Welcomes you!





Table of Contents

Administration	1
Superintendent's Welcome Letter	2
Mission/Vision Statement	3
School Hours	4
Attendance	5
Dress Code	6
ELD Program	7
Special Education Department	8
SchoolCafe	9
Food Service	10
Video/Audio Letter	11
Parent Associations	12
Title I Information	13
School Messaging System	15
Emergency Closure Information	16
Community Resource Directory	17

Administration

Dr. Arthur Abrom, *Superintendent of Schools*

Mr. Joshua Coatsworth *Acting Director of HR and Operations*

Ms. Dawn Connelly *Elementary Director of Teaching and Learning*

Dr. Nicole Malinowski *Secondary Director of Teaching and Learning*

Ms. Jessica Evans *Acting Director of Special Education*

Ms. Kelly Herr *Business Manager*

Mrs. Amber Abreu *Director of English Language Development*

Mr. Shawn Canady *Chief Information Officer*

Mr. Brian Hartman *Director of Buildings and Grounds*

Welcome

On behalf of our School Board, and our staff, welcome to the Lebanon School District! Your son/daughter is now officially a Cedar! The Lebanon Cedars are strong and resilient, and we enjoy a rich and proud heritage.

Our schools have so much to offer our students and our families, and our staff is dedicated to partnering with you to ensure your child becomes a successful, lifelong learner. The academic work is challenging and often requires that students work together, and collaborate with their classroom peers. We believe that such opportunities will prepare your child to meet the future with confidence and a strong foundation.

We hope that you will take full advantage of what the district has to offer. From visual arts to instrumental music programs, and athletic programs. We encourage students to participate in many activities that go beyond the core.

We look forward to seeing you in our schools and at our events, and wish your child a successful year!

Arthur W. C. Abrom. Ed.D.
Superintendent of Schools
Twitter: @lebanonsuper

P.S. We hope you will friend the district on Facebook, and follow us on Twitter





Mission Statement

Building on our tradition of educational excellence, the mission of the Lebanon School District is to challenge students to continually develop their skills as lifelong learners and responsible citizens.

H.O.P.E.
Help One Person Everyday

Vision Statement

The Lebanon School District will provide an educational experience that will optimize success for all students. We will honor best practices in teaching and learning so that all students learn at high levels. Our graduates will rely on the foundation of their K-12 education as they set their own goals. Our children will be confident, skilled communicators who are prepared to compete both academically and socially in the world beyond high school. They will be active citizens who contribute in both local and global communities. Lebanon School District graduates will rely on their strong sense of character, enabling them to make ethical decisions in an ever-changing world.

School Hours

K4/5-Grade 5 (All Buildings)

Buildings open for students not eating breakfast
at 8:50 AM

School Hours: 9:00 AM to 3:30 PM

Harding Elementary School

Mr. Michael R. Reager, Principal
622 Chestnut St., Lebanon PA 17042
(717) 675-2138

Breakfast begins at: 8:05 am

Southeast Elementary School

Mr. Michael Habecker, Principal
499 E Pershing Ave, Lebanon PA 17042
(717) 675-2163

Breakfast begins at: 8:20 am

Henry Houck Elementary School

Mr. Pedro Cruz, Principal
315 E Lehman St, Lebanon PA 17046
(717) 273-9391 x 4500

Breakfast begins at: 8:20 am

Southwest Elementary School

Mr. Craig Coletti, Principal
1500 Woodland St, Lebanon PA 17042
(717) 675-2173

Breakfast begins at: 8:10 am

Northwest Elementary School

Mrs. Jennifer Nordall, Principal
1315 Old Forge Rd, Lebanon PA 17046
(717) 273-9391 x 5500

Breakfast begins at: 8:10 am

Lebanon Middle School (6th-8th Grades)

Building opens for students for
students not
eating breakfast at : 7:45 AM
School Hours: 8:00 AM to 2:40 PM

Mr. Nicholas Bullock, Principal
350 N 8th St, Lebanon PA 17046
(717) 273-9391
Main Office x 2500 or 2501
Counseling Office x 2504

Breakfast begins at: 7:25 am

Lebanon High School (9th-12th Grades)

Building opens for students not eating
breakfast at: 7:25 AM
School Hours: 7:55 AM to 2:45 PM

Mr. William A. Giovino, Principal
1000 S 8th Eighth St, Lebanon PA 17042
(717) 273-9391 Main Office x 1500 or 1501
Counseling Office x 1505 or 1506
Attendance Office x 1507

Breakfast begins at: 7:25 am





Attendance

Regular attendance is an important part of every child's education. When students miss many days of school, or are consistently tardy, they lose valuable classroom instruction and experiences that cannot be made up. We encourage all of our students to attend school regularly. However, we know that students become ill, or have various appointments that can only be scheduled during the daytime. Below you will find an abbreviated version of our attendance procedures for ALL of our students. If you have additional questions, or would like to view our complete attendance policy, you may call your student's school, or view our policies online at www.lebanon.k12.pa.us.

Attendance Procedures:

1. On the day a student returns to school from an absence, the student must present an excuse signed by his parent/guardian. Students attending the CTC are required to present a note to both the LHS and the CTC.
2. If a written excuse is not provided, the days of absence may be considered unexcused. For students under age 18, unexcused absences will become unlawful and may result in a summary conviction for a violation of compulsory school attendance laws.
3. Unexcused tardiness can be cumulative and converted into days of unexcused absence. This action may result in an offense punishable by a fine for students of compulsory school age or a referral for disciplinary action.
4. Educational trips (maximum period of up to ten (10) school days) or family emergencies must be approved prior to the trip by the building principal or district administration.
5. If you elect to register your child into the four (4) or five (5) year old kindergarten program (K4 or K5) your child WILL be subject to compulsory education (attendance) rules as outlined by the Commonwealth of Pennsylvania.

Early Dismissal Procedures:

Students who are requesting an early dismissal must present a note signed by their parent/guardian. Students returning to school from an appointment must sign in at the office and present verification that they attended the appointment. Students may not take the entire day for an appointment. Failure to return promptly after an appointment may result in disciplinary action. Students who leave school for an early dismissal are responsible for any missed school work during their absence. Parents picking up students for an early dismissal may be required to report to the office.

A parent note must contain:

1. Student full name
2. Reason for absence
3. Dates that the student may be excused from school and should return to school
4. Signature of attending health care provider

Failure to provide all of the above information on the note may be reason to deny the note as an acceptable excuse.

Dress Code

Lebanon School District believes that the responsibility for the dress and grooming of a student rests primarily with the student and his or her parents or guardians and that appropriate dress and grooming contribute to a productive learning environment. We expect students to give proper attention to personal cleanliness and to wear clothes that are suitable for the school activities in which they participate without posing a risk to the health or safety of any student or school district personnel.

- **Students must wear clothing, including a shirt with sleeves, bottoms that do not expose skin above mid thigh, and practical sensible shoes.**
- **Pajamas, slippers, and pants worn below the waist are examples of attire that are prohibited.**
- **Hats, hoods, and other head coverings are not permitted to be worn on the head on school grounds, except when prescribed by the student's physician, as an expression of religious beliefs, or when the principal determines that a special situation warrants it.**
- **Clothing must cover the chest, torso, and lower extremities to at least the fingertips of the student's outstretched hands when arms are put down against his/her side.**
- **Clothing must cover undergarments and must not be see-through or contain rips, tears, or holes.**
- **Attire or grooming depicting or advocating violence, criminal activity, gang-related activity, use of alcohol or drugs, pornography, obscene or vulgar language, or hate speech are prohibited.**

Administration and enforcement of the dress code will be gender neutral and consistent. Consequences for students who do not follow the dress code described above will follow the current Code of Student Conduct Handbook.



Lebanon School District English Language Development



In the Lebanon School District nearly 20% of students and families use a language at home other than English, such as Spanish, Arabic, or Haitian Creole. Nearly one in five students are learning to read, write, speak, and listen in English. The Lebanon School District provides targeted services and supports to assist students in mastering these skills through a research based ELD Program (English Language Development Program).

How do you know if ELD Services are right for your child?

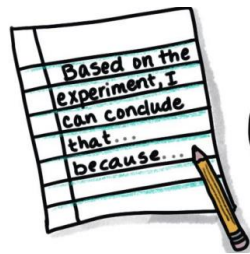
When students enroll in the Lebanon School District they are assessed in Reading, Writing, Speaking, and Listening to determine if and how they would benefit from the supports provided by the ELD program.

Parents whose children are recommended for ELD services are notified, in a language they understand, of the assessment results which include an English Language Proficiency Level. Students' scores are reported as an 'English Language Proficiency (ELP) Level' between 1 – 6.

If your child qualifies for ELD services (English Language Development), they will receive a combination of a variety of instructional supports such as:



USE VISUALS TO SUPPORT CONTENT



OFFER SENTENCE FRAMES FOR WRITING AND SPEAKING



ALLOW AND ENCOURAGE PRIMARY LANGUAGE SUPPORT

Products



GIVE CHOICE AND DIFFERENTIATION IN PRODUCTS

Adapted from 6 Ways to Accommodate Instruction by Valentina Gonzalez
<https://elementaryenglishlanguagelearners.weebly.com>

Special Education Services and Programs, Services for Gifted Students and Services for Protected Handicapped Students



According to state and federal special education regulations, annual public notice to parents of children who reside within a school district is required regarding child find responsibilities. School districts are required to conduct child find activities for children:

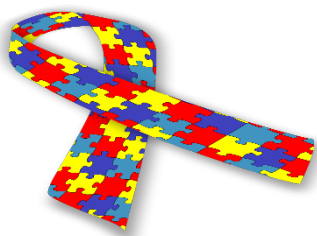
- who may be eligible for services via Chapter 14 of the Individuals with Disabilities Educational Improvement Act of 2004 (IDEA). For additional information related to Chapter 14/IDEA, please refer to Chapter 14, IDEA, or to the website: [//www.pattan.net/](http://www.pattan.net/).
- who may be eligible for services via Section 504 of the Rehabilitation Act of 1973. For additional information related to Section 504/Chapter 15 services, please refer to Section 504, Chapter 15, or the Basic Education Circular, titled "Implementation of Chapter 15."
- who may be eligible for gifted services via 22 PA Code Chapter 16. For additional information regarding gifted services, please refer to 22 PA Code Chapter 26. If a student is both gifted and eligible for special education, the procedures in IDEA and Chapter 14 shall take precedence.

This notice shall inform parents throughout the Lebanon School District of the child identification activities and of the procedures followed to ensure confidentiality of information pertaining to students with disabilities or eligible young children. This information is also published on the District website.

Children of school age through age twenty-one can be eligible for special education programs and services. If parents believe that their child may be eligible for special education, the parent should contact the principal of the child's school, or the Special Education Office at (717) 270-6726.

Children ages three through the school-age admission are eligible if they have developmental delays and, as a result, need special education and related services. Children who are less than the age of beginners and at least 3 years of age are considered to have developmental delay when difficulties exist in the areas of cognitive, communicative, physical, social/emotional, and self-help development.

If you have questions regarding difficulties you child may be experiencing, please contact the Lancaster-Lebanon Intermediate Unit 13 Early Intervention Program at 1 Cumberland St., Lebanon, PA 17042, (717) 450-1545.



Learning Knows No Bounds

SchoolCafe App

Lebanon School District is proud to offer SchoolCafe, a safe and secure way for parents to make online payments to their children's cafeteria account.

- View your child's cafeteria account balance
- Make payments to your child's account
- Review daily spending and purchases
- Low balance reminders



LEBANON SCHOOL DISTRICT

Check out your awesome new school menus!

The Nutrition Group

Daily Breakfast and Lunch Menus

You can easily view information about what is on our school menu each day. You can see an image and description for food items, as well as nutrition information.

Our innovative and interactive site and mobile app make our school menus more convenient and informative than ever before!

Nutrilice is brought to you by The Nutrition Group

Menus above represent sample menus and not actual menu items at your school.

Search for "School Menus by Nutrilice" on Google Play or the App Store or visit lebanon.nutrilice.com

Download on the App Store | GET IT ON Google Play

See your school menus at: lebanon.nutrilice.com



schoolcafe.com

Food Service Information

Here at Lebanon School District, we are committed to providing every student in our school community with all the tools they need to succeed including nutritious meals that everyone can enjoy together.

The National School Breakfast and Lunch Program Community Eligibility Provision (CEP) allows all students in the Lebanon School District to eat free breakfast and lunch, no application required!

Extra servings, ala carte (snack) items, and beverages will be available for purchase to students. Charging the sale of these items will not be permitted.

Part of what makes a great school culture is everyone sharing the same meal together. When all of our students are eating the same meals together, our cafeteria will become a place to learn more about new foods, make healthy choices, and fuel up for learning and play.

I hope you will join us in supporting this exciting program. Please feel free to contact me with any questions and to discuss any special dietary needs.

Sincerely,
Krista Edinger
Food Service Director
Lebanon School District
Kedinger@lebanon.k12.pa.us
717.270.6739





Use of Audio & Video Recording on District Provided Transportation

Dear Parent/Guardian:

All D.B. Fisher buses and vans used to transport Lebanon School District students are equipped with video and audio recording equipment. This includes vehicles used for athletic, activity and field trips as well as all of our regular transportation for students.

The use of video and audio recording equipment supports efforts to maintain the safety and security of all students, staff and drivers. The administration will monitor these recordings to efficiently deal with transportation related concerns.

Students and their parents understand that student use of school buses and vans constitutes consent to the District's audio/video monitoring.

Sincerely,

Kelly E. Herr
Business Manager

Parent Associations

The Lebanon School District offers family members of students many different ways to participate in the school community. All parents and guardians are invited to join the PTA, parent group, or booster organization that is available in each school. We've listed a few of these organizations below.

ELEMENTARY BUILDINGS

Harding - Parent Teacher Organization; meets monthly
Henry Houck - Parent Faculty Organization; meets monthly
Northwest - Parents and Teacher Together; meets monthly
Southeast - Parents and Teacher Together; meets monthly
Southwest - Parent Faculty Organization; meets monthly

LEBANON MIDDLE SCHOOL

Parent-Teacher Connection; meets monthly

LEBANON HIGH SCHOOL

Academic Boosters; meets monthly, first Thursday
Athletic Boosters; meets monthly, fourth Tuesday
Music Boosters; meets monthly, second Monday

FAMILY NIGHT OUT

Family Night Out events include all families, elementary through high school. FNOs are held at the high school, beginning at 5:30 PM. We kick-off each event with an informal meal in the cafeteria, followed by interactive presentations for parents and students. Child care is available; older students are invited to participate in the homework center, activities geared to them, or participate in the workshops.

VOLUNTEER OPPORTUNITIES

Our volunteers are busy people with the passion to help our students achieve great things! You can find our volunteers helping in classrooms, in booster clubs, speaking in classes, and even on the playground! There is a volunteer opportunity for everyone; just let us know what your interests are, and we'll match you with the perfect job! Anyone can volunteer. Parents, grandparents, community members, and business leaders; even students can volunteer. The most important volunteer, is YOU. For more information, please call 717-273-9391 ext. 6500.



Title I Services Information

Title I is a federally funded program under ESEA
(Elementary and Secondary Education Act)



What is a Title I Program?

Title I is a federal program to support literacy achievement in reading and mathematics in schools serving a high population of economically disadvantaged students. Title I supplements the local and state programs to ensure all students achieve at a high level in rigorous academic standards.

Schools qualify for Title I funds based on economic need in their community. All of our schools in Lebanon School District are designated Title I schools and receive this additional funding.

Title I improves student achievement through a variety of methods and activities in our schools:

Additional Staffing: Title I funds provide extra reading and math teachers, as well as support professionals, at our Title I schools.

Rigorous Academic Standards: The progress of all our students is monitored throughout the year to ensure they are meeting high goals.

Early Identification and Intervention: Students are assessed for additional service and receive instruction based on their needs. We offer intervention through additional teachers, computer-based programs, and classroom strategies.

Family Engagement: Our district encourages all parents to participate in their child's education and provides many ways to become involved. Parent Advisory Councils, Family Night Out activities, and school functions invite all families to come and support their children.

Professional Development: Courses and workshops for teachers are held throughout the year.

Q & A

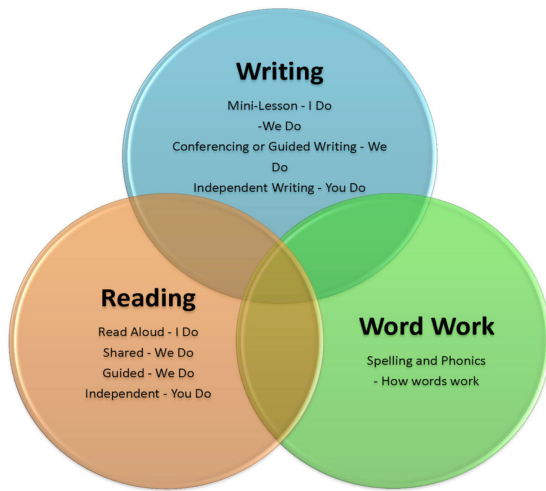
How do students and parents obtain Title I services? Every student in our elementary schools is given a short assessment at the beginning of the school year to determine if they are reading at grade level. Those students who are behind their peers are recommended for services.

What do Title I services look like? If your child is enrolled in Title I services he or she will receive additional instruction through a variety of methods. Some students receive supplemental reading instruction in a small group separate from their class. Others are given extra attention in their regular classroom while many students also complete reading support work through computer-based programs.

Does Title I take the place of a special education IEP? No, if your child has an IEP and is identified as needing Title I services these are offered in conjunction with services provided by the IEP.

Does my child participate in Title I every year? The goal of the Title I program is to get every student to a level in their literacy development that is at their grade and age. We assess students throughout the school year and once they attain grade level status in their skills they can be exited from the program.

Balanced Literacy



Parent Engagement

We need your help to provide better services to your child.

Decision-making: You can help make important decisions about your school by participating in PTO, completing the Parent Survey, and suggestions made during parent activities and Family Nights Out.

Compact: Each school has a school/student/parent compact that is revised annually. It contains information on how you can help your child in their learning.

Participation: Parent activities and Family Nights Out are great ways to become more engaged in your child's education.



More Information

Parents have the right . . .

to know the qualifications of their child's teachers;

to know the school improvement status of the school;

to know the level of achievement of their child;

to be involved in planning and implementation of parent involvement programs; and

to know if their child has been taught by a teacher who does not meet the requirements of highly-qualified.

Complaint Procedure

As part of its Assurances within Elementary and Secondary Education Act of 1965 (ESEA) program grant applications and pursuant

to Section 9306 of the Elementary and Secondary Education Act of 1965 (ESEA), an LEA accepting federal funds also agrees to adopt local written procedures for the receipt and resolution of complaints alleging violations of law in the administration of covered programs. For more information contact Michael Murphy, Federal Programs Coordinator.

Lebanon School District

1000 South Eighth Street
Lebanon, PA17042

www.lebanonsd.org

Parents and Guardians

You can take advantage of our Text Messaging Service

Our school utilizes the SchoolMessenger system to deliver text messages, straight to your mobile phone with important information about events, school closings, safety alerts and more.*

You can participate in this free service* just by sending a text message of “Y” or “Yes” to our school’s short code number, **67587**.

You can also opt out of these messages at any time by simply replying to one of our messages with “**Stop**”.

SchoolMessenger is compliant with the [Student Privacy Pledge™](#), so you can rest assured that your information is safe and will never be given or sold to anyone.



**Opt-In from
your mobile
phone now!**



**Just send
“Y” or “Yes”
to 67587**

i Information on SMS text messaging and Short Codes:

SMS stands for Short Message Service and is commonly referred to as a “text message”. Most cell phones support this type of text messaging. Our notification provider, SchoolMessenger, uses a true SMS protocol developed by the telecommunications industry specifically for mass text messaging, referred to as “short code” texting. This method is fast, secure and highly reliable because it is strictly regulated by the wireless carriers and only allows access to approved providers. If you’ve ever sent a text vote for a TV show to a number like 46999, you have used short code texting.

*Terms and Conditions – Message frequency varies. Standard message and data rates may apply. Reply HELP for help. Text STOP to cancel. Mobile carriers are not liable for delayed or undelivered messages. See schoolmessenger.com/txt for more info.





Inclement Weather Information

At the beginning of the school year parents are asked to make plans for who will pick up their children from school, and where will they stay, if schools are closed earlier than usual. The decision to delay, dismiss early, or close school due to inclement weather will be reported on local radio and television stations. We ask that you stay tuned to these channels when you believe weather may be a factor.

Remember to check our District Facebook and Twitter: @Lebanonsuper. Don't forget about SchoolMessenger and to keep your contact information up to date!

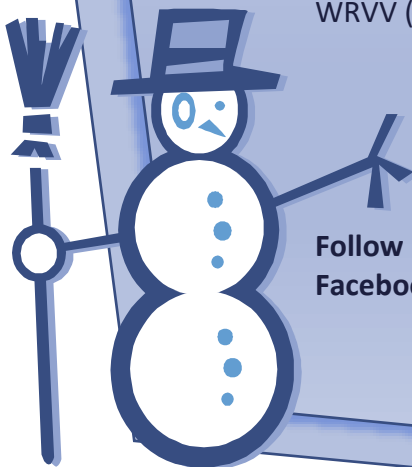
Radio Stations

WFVY (Lebanon) 100.1(FM)
WLBR (Lebanon) 1270(AM)
WWSM (Lebanon) 1510(AM)
WHP (Harrisburg) 580(AM)
WRVV (Harrisburg) 97.3(FM)

Television Stations

WHP-TV CBS (Harrisburg)
Channel 15 and 21
WHTM-TV ABC (Harrisburg)
Channel 27
WGAL-TV NBC (Lancaster)
Channel 8
WPMT-TV FOX (York)
Channel 43

Follow Dr. Abrom on Twitter: @Lebanonsuper and our District Facebook.



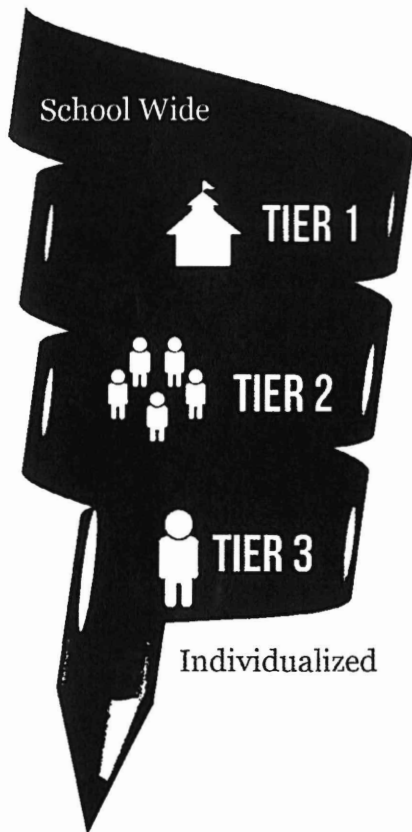


Parent & Community Resources



HOW DO WE ACHIEVE SUCCESS?

The CIS site coordinator provides Integrated Student Supports to the entire school. All site coordinators deliver three tiers of service to the school and its students:



TIER 1

School-wide services to help bring about school wide culture change and to achieve school-wide goals identified during an annual school assessment. Typically, the site coordinator will develop and execute on at least four opportunities for the entire student population and, in some cases, their families. These school wide opportunities can be but are not limited to: family engagement nights, drives for school supplies or needed clothing, or student assemblies that are directly tied to achievement of the school-wide goal. All of these are planned in conjunction with school personnel and serve a specific need.

TIER 2

This tier is identified for small groups of students who share a common issue or need extra attention but not necessarily intense case management. This level of service can be defined during the overall school needs assessment or can be created on an as needed bases throughout the school year. Examples of interventions in this tier include but are not limited to: tutoring, conflict resolution and grief counseling. The site coordinator will set up the best possible community support to address the issue of any smaller group. All students engaged in a tier 2 level intervention will be monitored throughout the year to assess if additional service is needed.

TIER 3

Individualized Support—This is the case management level supported provided to either 5 or 10% of the student population based on enrollment. All site coordinators are SAP trained and have been trained in trauma informed care. Working with the student's parents and teachers, the site coordinator completes a comprehensive student support plan. This tool captures strengths, weaknesses, risk factors as well as a baseline for their academic achievement, behavior in school and attendance for the student and builds an improvement plan with identified goals. Goals are determined on an individual basis and are developed using the SMART goal setting principals. Ideally, we want to help the student understand how to set goals for themselves that are achievable and will set the stage for long term behavior change. To achieve the identified goals the site coordinator connects the student to the necessary resources that will support the student in achieving their goals, makes the arrangements for any service delivery and sets up a regular check-in schedule to follow-up with the student. At the regular check-ins, the site coordinator makes sure that the supports and services identified are in place and helping. In the event things are still not going well the site coordinator will make plan adjustments that may include adding additional supports, changing providers or setting up other interventions as needed.

Community Resource Directory

Below are the names and contact information of community agencies that assist families with various needs. If you need further assistance and would like to contact a Family Engagement Coordinator / Social Worker, you may call the School District at (717)-273-9391 ext. 6925, 6926 or 6927.

- Align Formerly SVPS (Pregnancy Services)
 - (717)-274-5128
 - Prenatal education, counseling and referrals
- Career Link:
 - (717)-274-2554
 - Employment Assistance
- ELRC (Child Care Information Services):
 - (717)-274-6552
 - Child Care Services
- Community Action Partnership Program - (CAPP):
 - (717)-273-9328
 - Housing Assistance
- Crisis Intervention:
 - (717)-274-3363
 - Crisis Intervention Services
- Department of Health & Human Services
 - (717)-270-3600
 - Food stamps, Medical insurance, Heating assistance
- Domestic Violence Intervention:
 - (717)-273-7190 or 1-866-686-0451
 - Domestic violence shelter for women and children
- Lebanon County Bar Association
 - (717) 273-3113
 - Civil legal services for low-income students
- Lebanon County Christian Ministries (LCCM):
 - (717)-274-4400
 - Food, clothing, household items & Emergency Shelter Program (Fresh Start)
- Union Community Care:
 - (717)-272-2700
 - Health care for uninsured/ under-insured clients
- Union Community Care - Dental Care:
 - (717)-450-7015
 - Dental care for uninsured/ under-insured
- MID-PENN LEGAL SERVICES:
 - (717)-274-2834
 - Civil legal services for low-income students
- PA COUNSELING:
 - 1-855-272-1653
 - Behavioral Health Services
- Wellspan Philhaven:
 - (717)-273-8871
 - Behavioral Health Services
- SALVATION ARMY:
 - (717)-273-2655
 - Helps with Utilities, Clothing, Prescriptions
- TW PONESSA:
 - 1-800-437-5405
 - Behavioral Health Services
- WIC:
 - (717)-273-6940
 - Subsidized food for Women, Infants, and Children
- YMCA:
 - (717)-273-2691
 - Child Care Services, Recreational/Health Facilities

McKinney-Vento Information

Information for School-Age Youth

You may qualify for certain rights and protections under the federal McKinney-Vento Act.

If you live in any of the following situations:

- A shelter.
- A motel or campground due to the lack of an alternative adequate accommodation.
- A car, park, abandoned building, bus or train station.
- Doubled up with other people due to loss of housing or economic hardship.

As an eligible student you have the right to:

- Receive a free, appropriate public education.
- Enroll in school immediately, even if lacking documents normally required for enrollment.
- Enroll in school and attend classes while the school gathers needed documents.
- Enroll in the local school or continue attending your school of origin (the school you attended when permanently housed or the school in which you were last enrolled), if that is your preference and is feasible.

If the school district believes that the school selected is not in your best interest, the district must provide you with a written explanation of its position and inform you of your right to appeal its decision.

- Receive transportation to and from the school of origin, if you request this.
- Receive educational services comparable to those provided to other students, according to your needs as a student.



If you believe you may be eligible, contact one of the individuals below to find out what services and supports may be available.



Local Contact

Ana Marquez
(717) 675-4837
amarquezpauleus@lebanon.k12.pa.us

Becky Dunlop
(717) 821-5460
rdunlop@lebanon.k12.pa.us

Kim Briggs
(717) 821-5459
kbriggs@lebanon.k12.pa.us

State Contact
Storm Y. Camara |
333 Market Street, 3rd Floor |
Harrisburg, PA 17126-0333
Phone: 717.772.2066
scamara@pa.gov



Before and After School Care



FOR YOUTH DEVELOPMENT®
FOR HEALTHY LIVING
FOR SOCIAL RESPONSIBILITY

PLAY.LAUGH.LEARN

EXTENDED LEARNING PROGRAM

The YMCA is reaching out to see if you have interest in our Extended Learning Program for Before and After School .

The operating hours of the program would be

from 6:30 AM to 6:00 PM, outside of

school hours. If you would

like additional information,

please contact our Childcare

Coordinator by emailing:

childcare@lebanonymca.org



Migrant Education Program

THE PENNSYLVANIA MIGRANT EDUCATION PROGRAM

★ OFFERS **FREE** HELP FOR STUDENTS UP TO AGE 21

- ✓ Have you moved from one school district to another in the last 3 years to work in agricultural-related work?
- ✓ Is there anyone under the age of 22 living in your house?

WE OFFER **FREE**

- **Preschool Programs**
- **Training for Parents**
- **Summer School**
- **After or Before School Programs**
- **Assistance with College admission and Financial Aid Forms**
- **Referrals to Community Organizations**

MILLERSVILLE
UNIVERSITY
Find Your Future. Here.



We want to help students get the best education they can! To find out if you or the students living with you are eligible, call:

Amanda Guzman

Lebanon County Migrant Education

Migrant Education Program | Lebanon

129 Van Buren St
Lebanon, PA 17046

Phone:

717.675.7922

Email:

Amanda.guzman@millersville.edu



SCHOOL VACCINATION REQUIREMENTS FOR ATTENDANCE IN PENNSYLVANIA SCHOOLS

FOR ATTENDANCE IN ALL GRADES CHILDREN NEED THE FOLLOWING:



- 4 doses of tetanus, diphtheria, and acellular pertussis* (1 dose on or after the 4th birthday)
 - 4 doses of polio (4th dose on or after 4th birthday and at least 6 months after previous dose given)**
 - 2 doses of measles, mumps, rubella***
 - 3 doses of hepatitis B
 - 2 doses of varicella (chickenpox) or evidence of immunity
- *Usually given as DTP or DTaP or if medically advisable, DT or Td*
*** A fourth dose is not necessary if the third dose was administered at age 4 years or older and at least 6 months after the previous dose*
****Usually given as MMR*



ON THE FIRST DAY OF SCHOOL, unless the child has a medical or religious/philosophical exemption, a child must have had at least one dose of the above vaccinations or risk exclusion.

- If a child does not have all the doses listed above, needs additional doses, and the next dose is medically appropriate, the child must receive that dose within the first five days of school or risk exclusion. If the next dose is not the final dose of the series, the child must also provide a medical plan (red and white card) within the first five days of school for obtaining the required immunizations or risk exclusion.
- If a child does not have all the doses listed above, needs additional doses, and the next dose is not medically appropriate, the child must provide a medical plan (red and white card) within the first five days of school for obtaining the required immunizations or risk exclusion.
- The medical plan must be followed or risk exclusion.

FOR ATTENDANCE IN 7TH GRADE:

- 1 dose of tetanus, diphtheria, acellular pertussis (Tdap) on the first day of 7th grade.
- 1 dose of meningococcal conjugate vaccine (MCV) on the first day of 7th grade.

ON THE FIRST DAY OF 7TH GRADE, unless the child has a medical or religious/philosophical exemption, a child must have had the above vaccines or risk exclusion.

FOR ATTENDANCE IN 12TH GRADE:

- 1 dose of MCV on the first day of 12th grade. If one dose was given at 16 years of age or older, that shall count as the twelfth grade dose.

ON THE FIRST DAY OF 12TH GRADE, unless the child has a medical or religious/philosophical exemption, a child must have had the above vaccines or risk exclusion.

The vaccines required for entrance, 7th grade and 12th grade continue to be required in each succeeding school year.

These requirements allow for the following exemptions: medical reason, religious belief, or philosophical/strong moral or ethical conviction. Even if your child is exempt from immunizations, he or she may be excluded from school during an outbreak of vaccine preventable disease.

Pennsylvania's school immunization requirements can be found in 28 Pa.CODE CH.23 (School Immunization). Contact your healthcare provider or call 1-877-PA-HEALTH for more information.



chip Strong

High-quality health care coverage from CHIP helps keep kids strong

CHIP COVERS

- Routine check-ups
- Prescriptions
- Hospitalization
- Dental
- Eye Care
- Eyeglasses
- Behavioral care
- Specialty care
- More

CHIP covers uninsured kids up to age 19 in Pennsylvania. It doesn't matter why your kids don't have health coverage right now; CHIP may be able to help. Most kids receive CHIP for free. Others can get the same benefits at a low cost.

CHIP is brought to you by leading health insurance companies who offer quality, comprehensive coverage.

There is no limit on income. If your income is below CHIP guidelines, your child may be enrolled in Medical Assistance.

APPLY/RENEW

CHIPcoversPAkids.com • 800-986-KIDS



Pennsylvania's Children's
Health Insurance Program
We Cover All Kids.



GET CONNECTED. GET HELP.

COMPLETELY CONFIDENTIAL • FREE • ACCESSIBLE 24/7 • 180 LANGUAGES

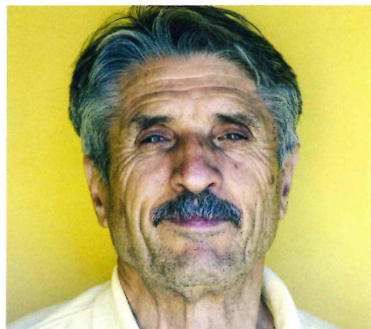
211 specialists can connect you with a wide range of resources and services. Contact us today to get expert, caring help with food, health care, housing and utilities payment assistance, employment services, veteran services, childcare, crisis and emergency counseling, disaster assistance, and more.

Call 211 for immediate assistance, visit PA211.org, or text your zip code to **898-211** for more information.





Prevent sexual violence. Promote healing.



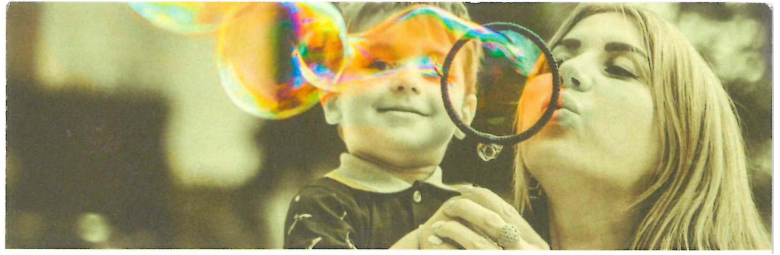
Lebanon

717-272-5308
615 Cumberland St.
Lebanon, PA 17042

Schuylkill

570-628-2965
17 Westwood Rd.
Pottsville, PA 17901

sarccheals.org | @sarccheals



SEXUAL VIOLENCE IS COMMON.

HEALING IS POSSIBLE.

24-hour Support

Survivors have a right to healing and support after sexual abuse. Our staff provide services at no-cost to the community, including:

- Counseling
- Medical and legal support
- Advocacy
- Bilingual staff
- Licensed therapists
- 24/7 Support line
- Support groups
- Help for all genders and ages.

Prevention & Community Education

We all have a role to play in prevention. Build your skills at home, in school, or at work. Contact us to learn more.

■ Prevent sexual violence. Promote healing.



Are You or Someone You Love a Victim of Domestic Violence?

Around the world, at least one in every three women has been beaten, coerced into sex or otherwise abused during her lifetime.* Abuse can happen to anyone, at any age, of any income and any race, including men. If you can answer yes to any one of the following questions, you may be in an abusive relationship.

- Embarrass or belittle you or put you down?
- Dislike your friends and family and discourage your relationships with others?
- Make all the decisions in the relationship?
- Chastise you after social functions for talking with other people?
- Act jealous of people you talk to?
- Blame you for his or her mistakes?
- Try to make you feel worthless or helpless?
- Forbid or prevent you from working or going to school?
- Keep money, credit cards, and checking accounts away from you?
- Control access to your medicines ?
- Threaten to have you deported?
- Throw dishes or other objects?
- Abuse your children or pet when mad at you?
- Push, slap, kick, or otherwise assault you?
- Demand sex, make you perform sexual acts you are not comfortable with, or sexually assault you?

Adapted from www.wednrd.com

There is free help available 24 hours a day, 7 days a week. We are a phone call away.

717.273.7190
1.866.686.0451

All call are completely confidential.

*Holtz, L., Ellsberg, M. and Gottsmeller, M. Ending Violence Against Women. Population Reports, Series L, No. 11., December 1999

DVI

DOMESTIC VIOLENCE INTERVENTION

of Lebanon County, Inc.

Assisting Victims of Domestic Violence

HOTLINE

1.717.273.7190

TOLL FREE

1.866.686.0451

A Proud Member Agency of the



United Way
of Lebanon County

DVI's Mission is to unite and educate the Lebanon County community by advocating for justice and creating safety for victims of domestic violence and their children so they may live free from abuse.

DVI receives funding from federal, state, county, and local sources, the United Way of Lebanon County, and private donors.

DVI is governed by an independent volunteer board of directors and managed by a professional staff.

DVI does not discriminate and provides services to victims regardless of race, color, gender, sexual orientation, ethnicity, age, creed, income, nation of origin or disability.



of Lebanon County, Inc.

PO Box 42 Lebanon, PA 17042

HOTLINE 1.717.273.7190

TOLL FREE 1.866.686.0451

We Can Help—Services and Support

Domestic Violence Intervention (DVI) of Lebanon County, Inc., can help victims of domestic violence, their significant others, and families in many ways. All of our services are provided without charge:

Counseling

- ◆ Individual Counseling for Adults
- ◆ Individual Counseling for Children
- ◆ Support Groups
- ◆ Safety Planning
- ◆ Telephone Counseling

Hotline and

Emergency Residential Shelter

- ◆ 24 -hour hotline
- ◆ 24-hour intake for emergency shelter needs.
- ◆ Safe space and crisis intervention
- ◆ Social Services information and referrals.
- ◆ Medical advocacy and accompaniment
- ◆ Options Counseling
- ◆ Goal Planning

Public Education

- ◆ Family Violence and Bullying Prevention Education for all education levels.
- ◆ Community awareness and event presentations.
- ◆ Volunteer training and coordinator,
- ◆ DV Prevention and Education Materials available for schools, agencies, and community groups.

Legal Advocacy

- ◆ Protection From Abuse Orders (PFA)
- ◆ Court and hearing accompaniment
- ◆ Individual and systems advocacy
- ◆ Information and referral



*If you are in danger,
always call 911 immediately.
Remember - no one has the right
to hurt you.*

What is a PFA?

A Protection From Abuse Order (PFA) is a restraining order that is available only to victims of domestic violence. It is a Civil Court Order that notifies the abuser/perpetrator not to harm or come in contact with the victim again. The PFA is granted by a judge when specific criteria that meet the legal definition of abuse are met, and can be sought by spouses, ex-spouses, parents, children, people related through blood or marriage, and/or current or former sexual or intimate partners.

How Do I File for a PFA?

Monday through Friday - contact the DVI legal advocate at 717.274.2801 ext. 4441. The PFA Office is located in Room 308, Lebanon Municipal Building, 400 S 8th St, Lebanon, PA 17042

Filing times are:

8:30 to 10:30 A.M.

1:00 to 2:30 P.M.

At the PFA office:

- ◆ The legal advocate will assist you in completing the petition paperwork and accompany you to a hearing (an ex-parte hearing) with a Judge.
- ◆ The Judge will read your Petition, ask you some questions, and grant a Temporary PFA if there is sufficient evidence.
- ◆ The Prothonotary's Office will process your petition and the temporary order. You will be notified of the date of the hearing to decide if the order will become permanent.
- ◆ You will be accompanied to the Sheriff's Office. A Sheriff will notify the police and the defendant about the order. When the defendant is served the order, you will be notified by the Sheriff's Office.
- ◆ Contact an attorney, or if you have no attorney, Mid-Penn Legal Services at 717.274.2834 before the final hearing. Mid-Penn Legal Services will represent DV victims at no charge in PFA cases.

After 5:00 P.M. and Weekends: Contact your local police department and inform them that you want to file an Emergency PFA order. They will help you call a District Justice who will issue an emergency PFA if there is sufficient evidence. An emergency PFA is valid until the next business day. To extend the emergency PFA, report to the PFA office the next business day to file a temporary PFA. *If you have any questions call the DVI legal advocate at 717.274.2801 ext 4441.*



NEED HELP PAYING FOR FOOD?

If you meet the guidelines below, we can help you apply for **Food Stamps (SNAP) benefits.**

Household Size	Gross Monthly Income	Gross Monthly Income for Household with Person(s) 60 and Older or Disabled.
1	\$1,702	\$2,023
2	\$2,299	\$2,743
3	\$2,896	\$3,620
4	\$3,494	\$4,368
each additional member	+\$598	+\$748

Call or text **APPLY** to our toll-free Food Stamps Helpline today to apply for benefits.

877.999.5964

(Se habla español)

*This organization is an equal opportunity provider. Guidelines effective through September 30, 2021.



The Central Pennsylvania Food Bank is committed to providing access to nutritious food for everyone struggling with hunger in each of the 27 counties we serve.

www.centralpafoodbank.org

Lebanon County

*Free Preschool & More!



You may be eligible!

***Free At-Home Program:** 0-3 years old

***Free Preschool:** 3-5 years old

Lebanon County Head Start and Early Head Start programs are accepting applications for children who live in Lebanon County.

The Programs Offer:

- High Quality Education (at home or in a classroom)
- Family Supports
- Health and Nutrition Services, and more

Apply today at:

www.iu13.org/HeadStart

Call for more information!

(717) 450-1512

headstart@iu13.org

¡Usted podría ser elegible!

***Programa gratis en su casa:** Niños de 0 a 3 años

***Escuela preescolar gratis:** Niños de 3 a 5 años

Los programas de Head Start y Early Head Start del Condado de Lebanon están aceptando solicitudes para los niños que viven en el Condado de Lebanon.

Los programas ofrecen:

- Una educación de alta calidad (en su casa o en una clase)
- Apoyo para la familia
- Servicios de salud y nutrición, y otros

Aplica hoy a:

www.iu13.org/HeadStart

Llame al (717) 450-1512 HOY para obtener más información.
Email: headstart@iu13.org

ONLINE LEARNING • APRENDIZAJE EN LÍNEA



Free English Classes

Let us help you reach your goal and get ready for career training.

Morning and
Evening
Classes

Clases por la
Mañana y la
Noche

Clases Gratuitas de Inglés

Permítanos ayudarle a alcanzar su meta y prepararse para su formación profesional.



For More Information | Para Mas Información:

Maritza Garcia

E: Maritza_garcia@iu13.org

P: 717-947-1466

Community
Education
a service of **iu13**

1020 New Holland Avenue | Lancaster, PA 17601 | 717-606-1600 | www.iu13.org



Free GED Classes

Let us help you reach your goal and get ready for career training.

Register Today

717-947-1480



Morning and Evening Classes

For More Information Contact

Cassi Redcay

E: Cassi_Redcay@iu13.org

P: 717-947-1480

Community
Education
a service of **iu13**

Join the many families, businesses, and schools that benefit from IU13 Community Education programs and services.



Adult Education classes & bilingual navigation services



Training for workers and management



Support for public and private schools

Contact the Community Education program at Lancaster-Lebanon Intermediate Unit 13 (IU13) to learn more about volunteer opportunities, classes, and services.

www.iu13.org/communityed
Lancaster: 717-606-1708
Lebanon: 717-450-1525
Email: communityed@iu13.org



Register Today!

Primary Locations:

Lancaster County CareerLink*
1016 North Charlotte Street
Lancaster, PA 17602

Bright Side Opportunities Center*
515 Hershey Avenue
Lancaster, PA 17603

Lancaster-Lebanon IU13*
One Cumberland Street
Lebanon, PA 17042

*HiSET Testing Centers (www.hiset.ets.org)
+Pearson Testing Center
(www.pearsonvue.com)

Community Education
a service of **iu13**

1020 New Holland Avenue | Lancaster, PA 17601
717-606-1600 | www.iu13.org

Published 4/2020

IU13 is an equal opportunity employer.

Community Education



High-quality, life-changing educational services



Community Education Classes

IU13 Community Education offers classes and tutoring services that help prepare adults and youth for the workforce and postsecondary education. Free courses are available in Lancaster and Lebanon counties at various sites in the community and county prisons.

Adult Basic Education (ABE) & High School Equivalency (HSE)

These classes focus on reading, writing, math, science, and social studies in preparation for the GED and/or HiSET test, employment opportunities, and postsecondary school.

ESL (English as a Second Language)

Immigrants, refugees, and other newcomers can improve their communication skills in order to reach educational, employment, and civic-related goals.

Citizenship

These classes help legal, permanent residents gain knowledge and English skills needed to pass the citizenship test.

Family Literacy

Classes assist parents in their role as a child's first and most important teacher. While children attend school or preschool, parents work on High School Equivalency (GED and HiSET) or ESL, as well as parenting skills. These classes also include interactive parent-child activities (Parents of children birth to 3rd grade).

Micro-credentials

These 6-8 week certification courses help students gain skills for a specific career. Certification includes Administrative Support Professional, Direct Service Workers, Hospitality Professional, Certified Nurse Assistant, and Teacher Assistant.



Services for Employers

IU13 Community Education offers local employers cost-effective, customized, on-site education programs for employees. These programs include workplace English or Spanish, foundation skills (such as reading, writing, and math), soft skills, and more.

Services for Schools

IU13 Community Education supports schools by offering programs that include:

- Parent education workshops focusing on helping children succeed academically.
- Serving as lead agency for the Community School at Reynolds (SDOL).
- Adult education classes in partnership with schools.



Refugee Center Services

Refugee Center services are designed to assist refugees, immigrants, and their families by connecting them to community resources, employment, and training.

Health Careers

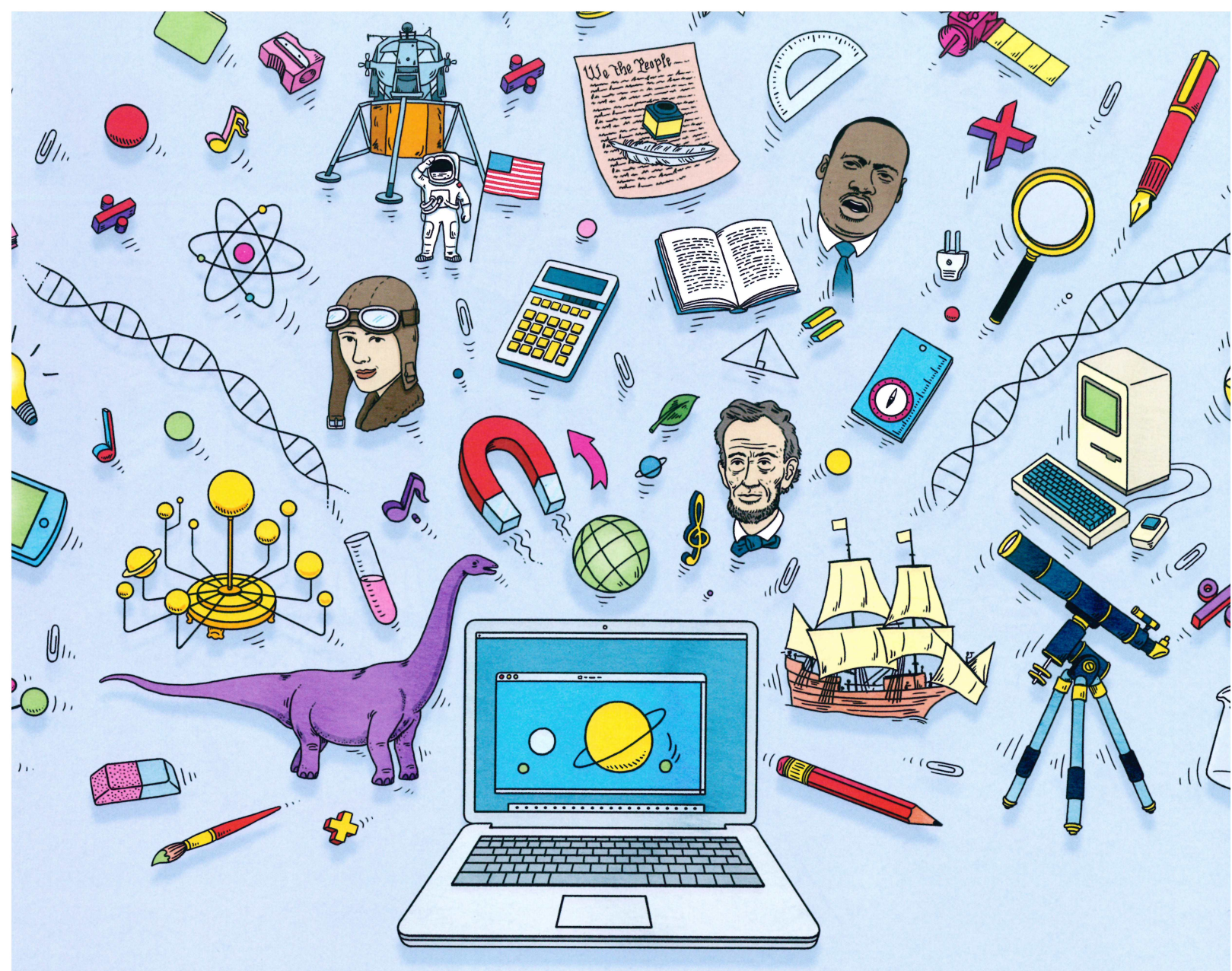
Students interested in obtaining employment in healthcare can take classes to prepare them to enter certification and postsecondary programs. Community Education offers specialized classes for students preparing for the Licensed Practical Nurse (LPN) entrance exam, the WorkKeys® assessment, and more.

Testing Services

IU13 Community Education administers Pearson Vue tests, such as the GED, in Lancaster county, as well as HiSET testing in both Lancaster and Lebanon counties.

Reentry Education

IU13 Community Education offers free services for incarcerated individuals and those returning to the community who want to pursue education and career opportunities. These integrated, high-quality services are offered in prison and community settings.



LEARN MORE. DO MORE. SHARE MORE.

Internet EssentialsSM from Comcast brings affordable, high-speed Internet to your home and greater access to what's important to you. You may qualify if you have at least one child who is eligible for the National School Lunch Program or if you receive HUD housing assistance.

<h2>\$9.95</h2> <p>PER MONTH + TAX</p>	<p>NO TERM CONTRACT NO CREDIT CHECK NO INSTALLATION FEE IN-HOME WIFI INCLUDED</p>
--	--

APPLY NOW AT
InternetEssentials.com **1-855-814-4372**

**INTERNET
ESSENTIALS**
 from Comcast

Restrictions apply. Not available in all areas. Limited to Internet Essentials service for new residential customers meeting certain eligibility criteria. Advertised price applies to a single outlet. Actual speeds may vary and are not guaranteed. After initial participation, if a customer is determined to be no longer eligible for the program but continues to receive Comcast service, regular rates will apply. Subject to Internet Essentials program terms and conditions. Call 1-855-846-8376 for restrictions and complete details, or visit InternetEssentials.com. © 2016 Comcast. All rights reserved. Internet Essentials is a program to provide home Internet service for families. It is not a school program, and is not endorsed or required by your school. Your school is not responsible for Internet Essentials accounts. IE_NSLP_FLY_0816



Why Attendance Matters, Starting In the Early Grades

Succeeding in school requires developing good habits, and **attendance is one of the most important**. As early as kindergarten, too many absences can cause a child to start to fall behind academically, research shows. In the early grades, it is especially problematic for poor children whose families lack the resources to make up for time lost on task. For **all** children, learning to attend school regularly can help them develop the skills of persistence and perseverance which can help them succeed in school and, ultimately, in life.

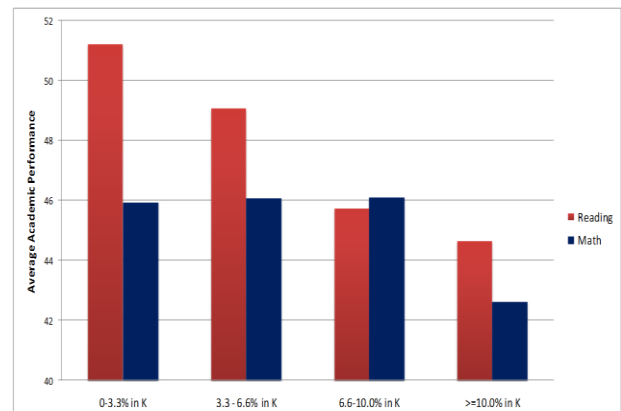
Yet, research shows that **one in 10 kindergarten and 1st grade students miss 10 percent** of the school year, the point at which absences start to affect test scores. By middle school, chronic absenteeism can predict high school dropout rates. By 9th grade, it's a better predictor than past 8th grade test scores.

Sometimes it's hard for parents and teachers to recognize when a child is missing too much school. Absences don't always come in a row. Students can still get into trouble academically if they are miss a day or two every few weeks.

Absences are not just a problem for the children who aren't in class. **Whole classrooms can be affected** if the teacher has to slow down learning to help children catch up. **Schools can lose money** when state funding depends partly on attendance.

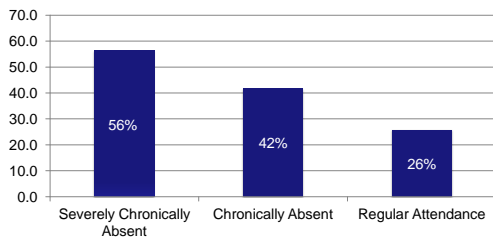
Parents play a key role in getting their children to school on time every day. Even with teenagers, parents should not underestimate the impact they can have by monitoring attendance and helping youth understand why going to school matters. Turn the page for some **tips on getting your kids to school**.

Chronic Absence in Kindergarten Affects 5th Grade Achievement For Poor Children



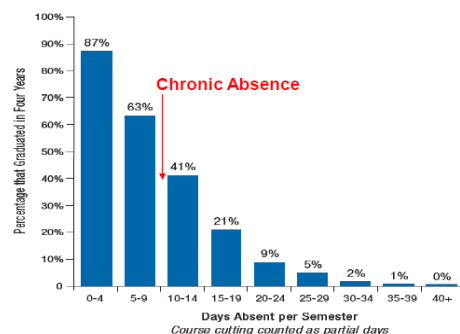
Sixth Grade Chronic Absence Predicts Likelihood of Drop Out

Nearly half of all chronically absent 6th graders during the 2002 – 2003 school year withdrew from school prior to graduation in Baltimore



9th Grade Attendance Predicts Drop-out Better than 8th Grade Test Scores for All Students

On Time Graduation Correlation to 9th Grade Attendance



What Parents Can Do

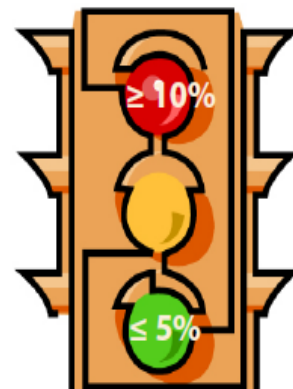
1. **Send your children to school every day**, starting in kindergarten, to teach your children that attendance counts. Continue to monitor their attendance through high school
2. **Don't let your child miss school without a good reason**. Try to avoid medical appointments during the school day or vacations when school is in session.
3. **Create routines and stick to them**. Set a regular bed time and morning routine to get ready for school. For older students, be sure they get enough sleep.

When do absences become a problem?

Chronic Absence
18 or more days

Warning Signs
10 to 17 days

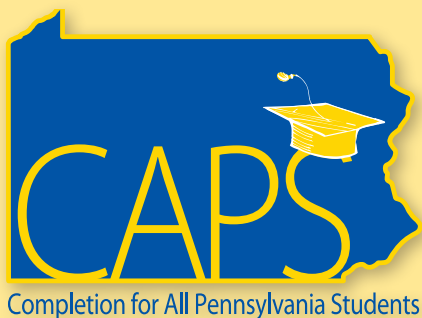
Satisfactory Attendance
9 or fewer days absent



Note: These numbers assume a 180 day school year

4. **Keep an eye on what's happening with your children's education**. Look for signs that they are bored, struggling with school work or having trouble with friends. Seek out tutoring, talk with teachers. Nurture interest in being in school by finding engaging afterschool activities and encourage involvement in sports.
5. **Learn about the school's policies**. What incentives do teachers offer for good attendance? What counts as an excused or unexcused absence? What are the penalties?
6. **Find your own ways to reward good attendance**. You know best what motivates your child.
7. **Be open and honest with school officials**. Make sure the school has your up-to-date contact information. Work with the teacher, counselor and principal on problems your children are experiencing.
8. **Seek medical help when absences pile up**. Anything from asthma to a bad bout of head lice can keep kids out of school. Work with your doctor or school nurse.
9. **Turn to other families who can help you** with dropping off or picking up children and with babysitting.
10. **Seek help when you have a problem**. If absences result from family issue—a sudden illness, a lost job, foreclosure or a broken-down car—the school can connect you to other families or to social service providers.

Attendance Works helps schools, communities and districts track and reduce chronic absence. Go to www.attendanceworks.org



School Attendance

Strategies for Schools, Families, and Youth

Introduction

A strong body of research shows that chronic absenteeism is a powerful predictor of students at risk of not completing their education. Defined as missing at least 10 percent of school days, excused or unexcused, chronic absenteeism contributes to low academic achievement and disengagement from school. It is not only missing school at the secondary level that creates problems. Chronic absenteeism at the kindergarten and first grade levels can lead to delays in reading and math skills that can impact a student for years to come. An estimated five to seven million students are chronically absent each year. Not completing their education and the lack of a high school diploma can have negative consequences for a student that last a lifetime. It is imperative that educators, families, and communities work together to eliminate chronic absenteeism and provide a path that permits students to graduate.

Myths About School Attendance

- **There is no need to be concerned with school attendance until middle school or high school**

Chronic absenteeism at the elementary level can lead to academic deficits and disengagement from learning

- **Attendance is solely the responsibility of families; there is nothing schools can do to improve attendance**

Schools can recognize the unique needs of their students and community, and work to implement interventions that will improve student attendance

- **Missing school is not an issue as long as the student makes up the work**

Chronic absenteeism makes it very difficult to complete missed assignments and can be an indication of more significant issues for the student

Attendance Strategies

- Local Education Agencies, Administration and Staff
 - ▷ Be familiar with the research on chronic absenteeism
 - ▷ Implement and monitor early-warning systems meant to track data on absenteeism and other indicators of students who are at risk of dropping out
 - ▷ Identify underlying causes of chronic absenteeism, for individual students and school wide
 - ▷ As appropriate, implement programs offering alternative ways to attend school
 - ✓ After hours school
 - ✓ Community-based, alternative sites for school



- ✓ School within a school
- ✓ Cyber classes
- ▷ Review policies related to attendance and identify areas that may be contributing to chronic absenteeism

- Families
 - ▷ Make attending school a priority for the family
 - ▷ Monitor your child's attendance at school
 - ▷ Encourage your child to share what is keeping them from attending school
 - ▷ Work with the school to identify supports and services necessary to help your child regularly attend school
- Community Leaders
 - ▷ Learn about chronic absenteeism and recognize the impact it has on your community

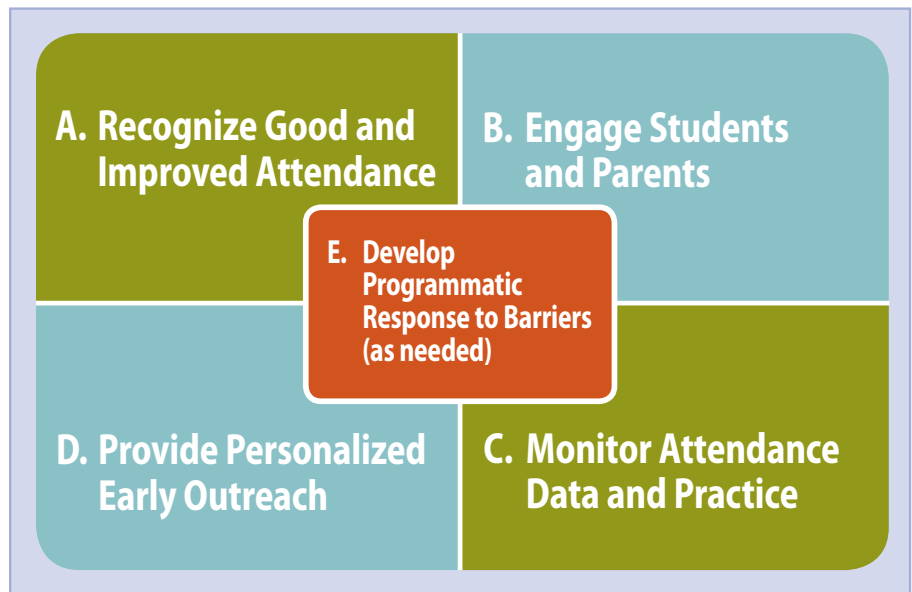
Continued on reverse ...

- ▶ Make student attendance at school a priority and organize local resources to promote it
- ▶ Partner with families and school personnel to creatively work together
- Youth
 - ▶ Recognize that being absent as little as two days a month will have a negative impact on the likelihood that you will graduate
 - ▶ Understand the importance of a high school diploma
 - ▶ Be open with school personnel and your family about why you are frequently absent
 - ▶ Utilize all of the supports and services the school and community have available for you

Successfully completing high school is an important first step in creating a healthy and fulfilling adult life. Promoting regular school attendance and eliminating chronic absenteeism are critical components of school success.

The following description from *Attendance Works* highlights key strategies to reduce chronic absence:

Schools can send a clear message of the importance of attending school by providing recognition or rewards to students and families. Schools can



Used with the permission of Attendance Works. <http://www.attendanceworks.org>

engage families and students with a warm, welcoming environment and inform families of research findings about the positive impact of good attendance and the negative effects of missing too much school. Monitor attendance data and identify those students that are at-risk and match them to an appropriate intervention or support. Personalize the environment and provide the opportunity for the development of a relationship with a caring adult or mentor to help improve attendance. Identify the factors contributing to chronic absence and address the barriers and common challenges within your system.

Resources for Families

Increasing Graduation Rates and Decreasing Dropout Rates Initiative, Educational Initiatives
www.pattan.net

Attendance Works, Advancing Student Success by Reducing Chronic Absence,
www.attendanceworks.org

Check and Connect, Student Engagement Intervention Model,
www.checkandconnect.umn.edu

National Center for School Engagement,
www.schoolengagement.org

HUNE, Inc., www.huneinc.org

PEAL Center, www.pealcenter.org



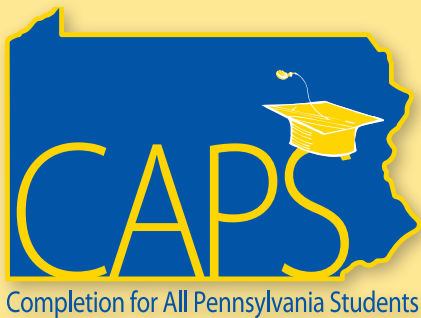
Do you know a student who is considering dropping out of school?

Contact your school!



pennsylvania
 DEPARTMENT OF EDUCATION

Bureau of Special Education
 Pennsylvania Training and Technical Assistance Network



Helping Students Succeed and Graduate From High School

Strategies for Families

What Can Families Do to Support Their Children?

Families play an important role in making sure their son or daughter graduates from high school. In fact, when families are involved:

- Students achieve more, regardless of socioeconomic status, ethnic/racial background, or the parents' education level (Antunez, 2000)
- Students have higher grades and test scores, better attendance, and complete homework more consistently, and go on to postsecondary education (National Parent Teacher Association, 2009)

What can families do to ensure that their son/daughter graduates? Stay involved regardless of how old your son/daughter is! Ways families can be involved go beyond attending school events. As a family member, you can:

- Support your son's/daughter's learning by providing time and space at home to complete assignments
- Monitor your son's/daughter's time, attendance, behavior, grades, boundaries, and resources
- Encourage a positive self-image and a "can do" spirit

- Model lifelong learning and enthusiasm for education
- Advocate for improved learning opportunities
- Consider joining your local family organization to take an active role in school matters
- Collaborate with school staff and members of the community to identify possible work experiences for your son/daughter (Mapp & Kutner, 2013)

How Are We Supporting Our Students with Disabilities to Graduate from High School?

The Pennsylvania Department of Education's Bureau of Special Education (BSE) is partnering with our school and a number of other schools throughout the state to implement a plan to improve graduation rates of students



with disabilities. This means that we will be identifying students that are off-track for graduation and implementing evidence-based practices that lead to higher graduation rates. We will be working with families to develop plans to meet the individual needs of students that are identified as off-track for graduation.

How Will We Know if Students Are Off-Track for Graduation?

Identifying students that are off-track for graduation is a complex task. To assist with this process, our school will be using an Early Warning System (EWS). We will use available student information to alert school staff of students that are off-track for graduation. We will closely monitor student attendance, behavior, and course performance. If students are identified as off-track, we will engage in a problem-solving process to help students stay in school and graduate. For example, if a student is struggling to attend school regularly, interventions will be based around attendance. If a student is failing English or math, interventions will aim to improve his/her grades. Early Warning Systems are also used to monitor student progress once interventions are identified and in place. Families will be key team members in our problem-solving process and will provide input on how the interventions are working for their son/daughter.

How Can Families Support Student Success?

Here are some proven strategies that will increase students' chances of graduating from high school:

ATTENDANCE	BEHAVIOR	COURSE PERFORMANCE
<ul style="list-style-type: none">• Ensure your son/daughter arrives on time each day for school.• Inform the school immediately if there are matters that may arise that may affect the attendance of your son/daughter.• Check-in with your student's teachers about your son's/daughter's attendance for each class.	<ul style="list-style-type: none">• Consider how your son/daughter interacts with others in the school environment.• Be alert to any signs that may indicate bullying.• Share your concerns with the school – both the negative and positive. Open communication is the key.• Share with the school if there are changes or problems at home that might affect the student's behavior in school.	<ul style="list-style-type: none">• Review your son's/daughter's progress reports, report card, and progress on Individualized Education Program (IEP) goals. Is she or he passing all courses? If not, do you know who to speak with and how to seek help for your son/daughter?• Know the graduation requirements for your son/daughter. Ask about credits and how many are needed for graduation.• Regularly attend conferences and IEP meetings.

Resources for Families

Pennsylvania Training and Technical Assistance Network (PaTTAN),
www.pattan.net

Select Increasing Graduation Rates and Decreasing Dropout Rates under the Educational Initiatives Tab to find information regarding the State Systemic Improvement Plan (SSIP) and links to resources to support graduation.

Select Parent Information under the Educational Initiatives Tab to find links to publications, tip sheets, webinars, and links to other parent resources across the state.

Select PaTTAN Publications under the Resources Tab to find a library of family focused publications under the Parents – Informed. Involved. Inspired. link.

National Dropout Prevention Center for Students with Disabilities (NDPC-SD), www.ndpc-sd.org/

Select Resources for Parents under the Resources tab to find parent publications, presentations, and information on evidence-based dropout prevention programs.

Philadelphia HUNE, Inc.,
www.huneinc.org/

This website contains information for families about free bilingual English and Spanish training and technical assistance and individual assistance to families of infants, toddlers, children, and youth with disabilities.

Parent Education and Advocacy Leadership (PEAL),
www.pealcenter.org

This website contains resources for families and schools on topics such as Assistive Technology and Healthcare. Family trainings and events, print publications, and a lending library are also available.

Mission Empower,
www.missionempower.org

This website contains tips and activities to assist families and schools in their journeys of promoting inclusion.

References:

Antunez, B. (2000). When everyone is involved: Parents and communities in school reform. In *Framing effective practice: Topics and issues in the education of English language learners* (pp. 53–59). Washington, DC: National Clearinghouse for Bilingual Education.

Mapp, K. L., & Kuttner, K. L. (2013). *Partners in Education: A Dual Capacity-Building Framework for Family-School Partnerships*. Austin: SEDL.

National Parent Teacher Association. (2009). *Family-school partnerships*. Retrieved January 13, 2016 from http://www.pta.org/family_school_partnerships.asp.

**Do you know a student who is considering dropping out of school?
Contact your school!**


PaTTAN
Pennsylvania Training and
Technical Assistance Network

My Notes



One District, Many Stories

Lebanon School District
1000 South 8th Street
Lebanon, PA 17042
717-273-9391

<https://www.lebanonsd.org>



@Lebanonsuper



@LebanonSchoolDistrict